

Art Along The Rivers

A BICENTENNIAL CELEBRATION

ART AS
ADVOCATE



George Caleb Bingham, American, 1811–1879; *Raftsmen Playing Cards*, 1847; oil on canvas; 28 1/16 x 38 1/16 inches; Saint Louis Art Museum, Bequest of Ezra H. Linley by exchange 50:1934

LOOKING PROMPTS

Imagine you are sitting or standing on the raft with the people pictured. Where would you like to be on the raft? What might you see if you were to look in different directions? What do you imagine it would feel like to be on the raft?

Now, imagine you are on the end of the raft facing the people we see in the painting. Explore with your senses.

What do you see?

What can you hear?

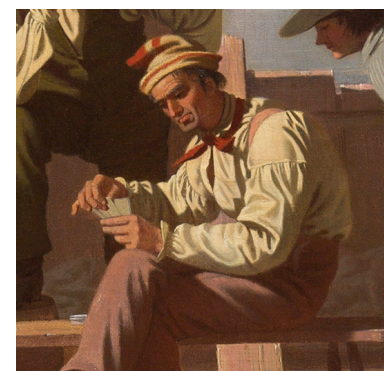
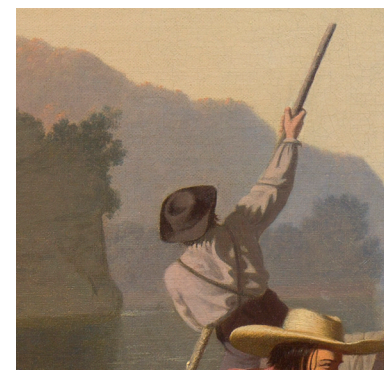
What do you smell?

What does the weather feel like on your skin?

As you gaze across the flat surface of the water, what do you notice?

If you could ask any of the people in this scene a question, who would you ask and what would you like to ask them?

CLOSE LOOKING



SAINT LOUIS ART MUSEUM

LOOKING GUIDE
ART ALONG THE RIVERS
SLAM.ORG

Art Along The Rivers

A BICENTENNIAL CELEBRATION

ART AS
ADVOCATE



John Rogers, American, 1829–1904; *The Slave Auction*, 1859; painted plaster; 13 1/4 x 9 inches; Albany Institute of History & Art, gift of Mrs. Ledyard Cogswell, Jr., from the Benjamin Walworth Arnold Collection 2021.205

LOOKING PROMPTS

What's going on in this sculpture?

What do you see that makes you say that?

What more can you find?

Consider each figure in the sculpture:

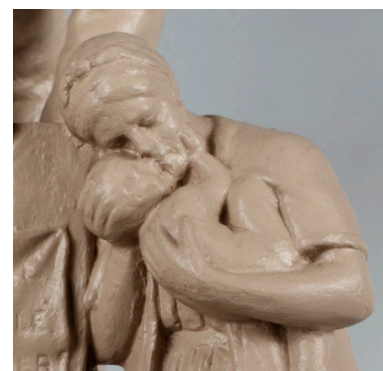
What do you notice about their pose?

How would you describe their facial expression?

What is one word you would use to describe their mood or emotion?

What do you wonder about as you look at this sculpture?

CLOSE LOOKING



SAINT LOUIS ART MUSEUM

LOOKING GUIDE
ART ALONG THE RIVERS
SLAM.ORG

Art Along The Rivers

A BICENTENNIAL CELEBRATION

ART AS
ADVOCATE



Ken Light, American, born 1951; *Race Wall*, St. Louis, Missouri, 1971, printed 1999; gelatin silver print; image: 12 1/2 x 18 3/4 inches, sheet: 16 x 20 inches; Saint Louis Art Museum, Gift of August A. Busch Jr., by exchange 39:2021; © Ken Light

LOOKING PROMPTS

What do you see as you look at this photograph?

What do you think about that?

What does it make you wonder about?

CLOSE LOOKING



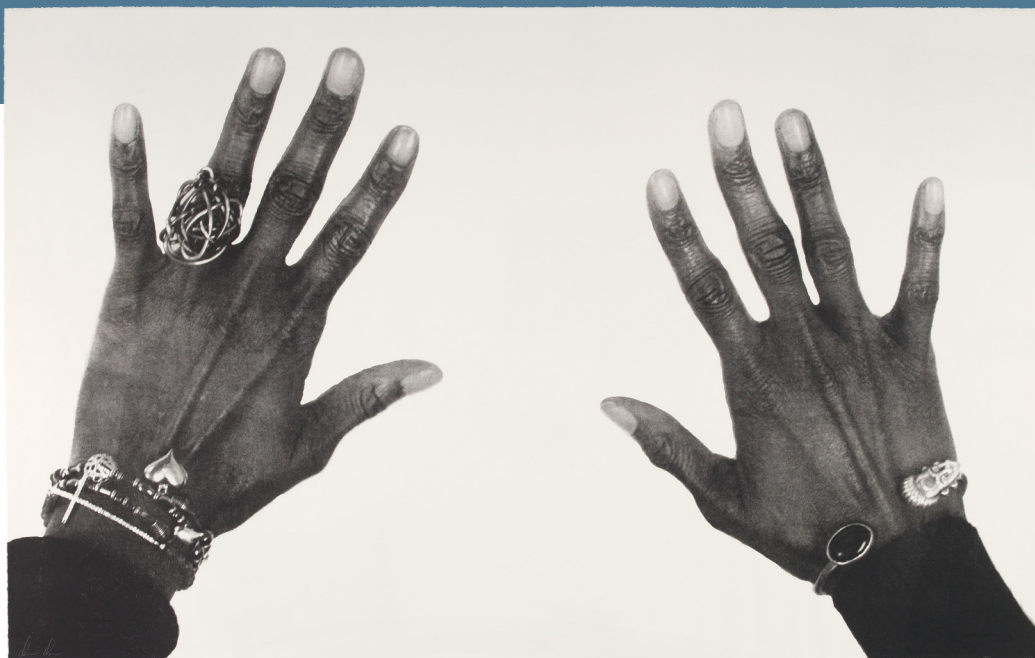
SAINT LOUIS ART MUSEUM

LOOKING GUIDE
ART ALONG THE RIVERS
SLAM.ORG

Art Along The Rivers

A BICENTENNIAL CELEBRATION

ART AS
ADVOCATE



Damon Davis, American, born 1985; published by Wildwood Press, Saint Louis, Missouri; *All Hands On Deck #5*, 2015; lithograph; sheet (irregular): 32 x 50 13/16 inches; Saint Louis Art Museum, The Sidney S. and Sadie Cohen Print Purchase Fund 9:2016.5; © Damon Davis

LOOKING PROMPTS

Look closely at this work of art. What do you discover as you look?

Write a list of 10 nouns or adjectives that describe what you see.

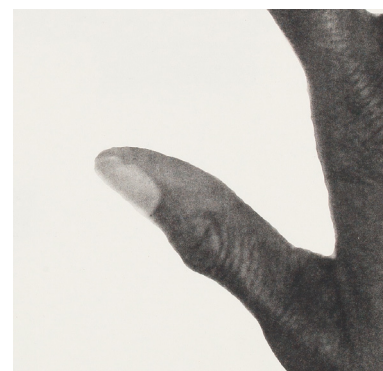
What details emerge as you continue to look?

How would the impact of this image change if it were very small? If it were very large?

What if you were to change the background?

What else do you notice about the composition of this image?

CLOSE LOOKING



SAINT LOUIS ART MUSEUM

LOOKING GUIDE
ART ALONG THE RIVERS
SLAM.ORG

Art Along The Rivers

A BICENTENNIAL CELEBRATION

ART AS
ADVOCATE



Emmet Gowin, American, born 1941; *The Abandoned and Condemned Village of Times Beach, Missouri*, 1989; gelatin silver print; image: 9 5/8 x 9 3/4 inches, sheet: 11 x 14 inches; Saint Louis Art Museum, Gift of Emmet and Edith Gowin in honor of Eric Lutz 26:2021; © Emmet Gowin

CLOSE LOOKING



LOOKING PROMPTS

Before reading any information about this artwork, look closely at the image.

If you were the artist, what title would you give it? What about it makes you choose that title?

If you were asked to choose a song to go along with this image, what song would you choose?

What more can you find as you look at this image?

SAINT LOUIS ART MUSEUM

LOOKING GUIDE
ART ALONG THE RIVERS
SLAM.ORG

Art Along The Rivers

A BICENTENNIAL CELEBRATION

ART AS ADVOCATE



LOOKING PROMPTS

Compare and contrast these three images. What is similar about each of the landscapes? What is different?

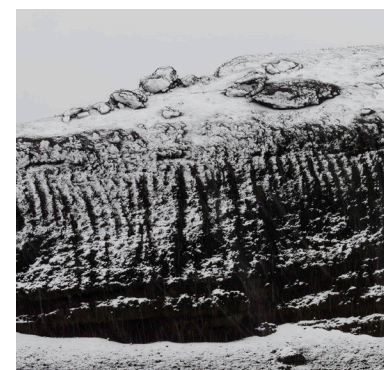
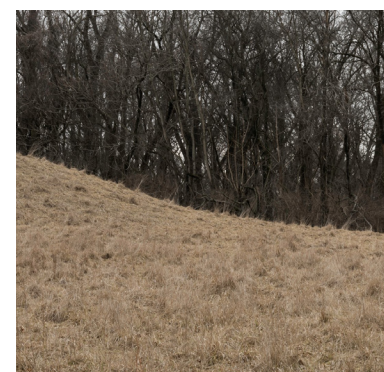
If you could choose one of these images to teleport into, which one would you choose?

What caused you to choose that one?

Where would you want to land in the image?

What would you want to have with you if you were in this landscape?

CLOSE LOOKING



(top) Jennifer Colten, American, born 1962; *Mound 7040*, from the project *Significant and Insignificant Mounds*, 2017; archival pigment print; 26 1/2 x 40 inches; sheet: 30 1/2 x 44 inches; Saint Louis Art Museum, Courtesy of the artist 2021.99; © Jennifer Colten

(middle) Jennifer Colten, American, born 1962; *Mound 2484*, from the project *Significant and Insignificant Mounds*, 2017; archival pigment print; 26 1/2 x 40 inches; sheet: 30 1/2 x 44 inches; Saint Louis Art Museum, Courtesy of the artist 2021.101; © Jennifer Colten

(bottom) Jennifer Colten, American, born 1962; *Mound 7158*, from the project *Significant and Insignificant Mounds*, 2017; archival pigment print; 26 1/2 x 40 inches; sheet: 30 1/2 x 44 inches; Saint Louis Art Museum, Courtesy of the artist 2021.100; © Jennifer Colten

SAINT LOUIS ART MUSEUM

LOOKING GUIDE
ART ALONG THE RIVERS
SLAM.ORG