

Art Along The Rivers

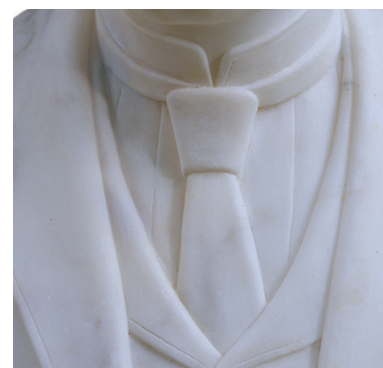
A BICENTENNIAL CELEBRATION

ART ON
DISPLAY



Edmonia Lewis, American, 1844–1907; *Bust of James Peck Thomas*, 1874; marble; 22 x 18 x 10 inches; Allen Memorial Art Museum, Oberlin College, Oberlin, OH. R. T. Miller Jr. Fund 2021.155

CLOSE LOOKING



LOOKING PROMPTS

Look closely at this work of art.

What do you wonder about?

What might you learn about the person who is the subject of this sculpture by looking closely?

If you were able to travel back in time and watch this sculptor at work, what questions would you ask her?

Imagine if the figure's arms and hands were visible. Strike a pose that reveals ways the arms and hands could enhance the figure's pose. Why did you choose this particular movement?

Imagine the artist had sculpted the entire body of James Peck Thomas. If you're comfortable, demonstrate how the figure would stand, walk, or dance. What do you see that informs your ideas?

Looking extension:

If you were to sculpt a bust of someone you knew, who would it be? Where would you display it and why would you display it in this way? Sketch an image of your sculpture on display.

SAINT LOUIS ART MUSEUM

LOOKING GUIDE
ART ALONG THE RIVERS
SLAM.ORG

Art Along The Rivers

A BICENTENNIAL CELEBRATION

ART ON
DISPLAY



Joseph Rusling Meeker, American, 1827–1887; *The Land of Evangeline*, 1874; oil on canvas; 33 1/8 x 45 1/8 inches; Saint Louis Art Museum, Gift of Mrs. Wright Prescott Edgerton in memory of Dr. and Mrs. W. T. Helmuth by exchange 163:1946

LOOKING PROMPTS

If this image were the inspiration for a story, what type of story would it be?
What do you see that makes you say that?

How does this space make you feel? What emotions arise while you are looking closely? What do you see that makes you say that?

Imagine drifting in a boat through this scene.

How would you describe your surroundings?

Write a letter home and describe what you see, hear, and smell around you in this scene.

CLOSE LOOKING



SAINT LOUIS ART MUSEUM

LOOKING GUIDE
ART ALONG THE RIVERS
SLAM.ORG

Art Along The Rivers

A BICENTENNIAL CELEBRATION

ART ON
DISPLAY



Winslow Homer, American, 1836–1910; *Early Morning After a Storm at Sea*, 1900–1903; oil on canvas; 30 1/4 x 50 inches; The Cleveland Museum of Art, Gift J. H. Wade 2021.182

LOOKING PROMPTS

Imagine sitting in the location of this painting.

What would the air feel like?

What sounds would you hear?

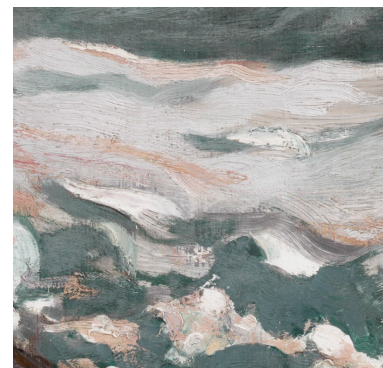
What would you smell?

What activities would you engage in if you were in this place?

If you could insert one thing into this landscape, what would it be and why?

Sketch an image of your addition to this landscape.

CLOSE LOOKING



SAINT LOUIS ART MUSEUM

LOOKING GUIDE
ART ALONG THE RIVERS
SLAM.ORG

Art Along The Rivers

A BICENTENNIAL CELEBRATION

ART ON DISPLAY



Komuro Suiun, Japanese, 1874–1945; *Summer Scene with Solitary Duck amidst Rose Mallow and River Reeds*, 1903 or 1904; hanging scroll; ink, color, and oyster-shell-white pigment (gofun) on silk; image: 44 1/2 x 27 1/2 inches, scroll: 81 x 34 inches; Saint Louis Art Museum, The Langenberg Endowment Fund 101:2017

LOOKING PROMPTS

Look closely at this work of art.
Let your eyes wander up and down
and side to side.

Select one of the words below that
you feel connects to the artwork.
Or choose your own word.

shiny joyful dreamy complex

detailed textured stiff soft

whimsical fun heavy loud

wild peaceful solemn story

bold gentle imaginary musical

rhythmic quiet lonely

warm cold mellow lively

vivid colorful abstract

realistic slick rough

mysterious care labor curious

memory fuzzy home course

smooth patterns happy

What do you see that inspired your word?

Write a poem inspired by the painting
and the word you chose.

As you look at this painting, what do you
imagine will happen next? Write a very
short story or draw a picture to describe
what will happen next.

CLOSE LOOKING



SAINT LOUIS ART MUSEUM

LOOKING GUIDE
ART ALONG THE RIVERS
SLAM.ORG

Art Along The Rivers

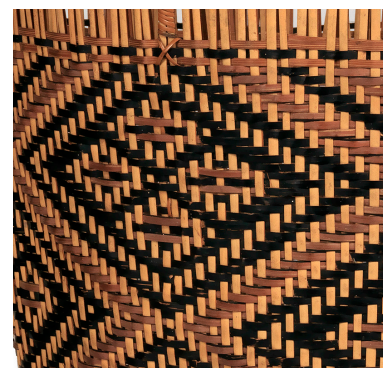
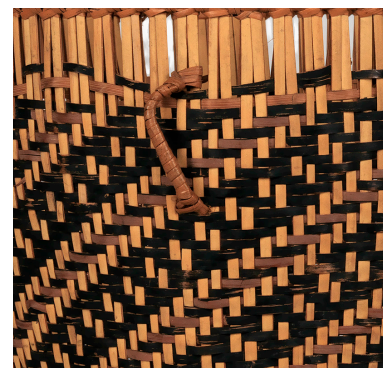
A BICENTENNIAL CELEBRATION

ART ON
DISPLAY



Pala'wan artist, Philippines; *Baskets*, before 1904; rattan and nito; top basket: 9 x 10 5/8 x 8 7/8 inches, bottom basket: 9 11/16 x 11 1/8 x 11 inches; Loaned by the University of Pennsylvania Museum of Archaeology and Anthropology, Philadelphia, PA, Gift of the Philadelphia Commercial Museum (also known as the Philadelphia Civic Center Museum), 2003 2021.179-.180

CLOSE LOOKING



LOOKING PROMPTS

When looking at these objects, what stands out to you the most?

Compare and contrast these two baskets. Describe what is similar about them. Then, describe what is different.

What would you like to learn about these baskets?

SAINT LOUIS ART MUSEUM

LOOKING GUIDE
ART ALONG THE RIVERS
SLAM.ORG

Art Along The Rivers

A BICENTENNIAL CELEBRATION

ART ON
DISPLAY



CLOSE LOOKING



(top) Visayan artist, Philippines; *Cloth*, late 19th century; pineapple fiber, silk, and cotton; 14 3/4 x 74 7/16 inches; Loaned by the University of Pennsylvania Museum of Archaeology and Anthropology, Philadelphia, PA, Gift of Philadelphia University, 2016 2021.176

(bottom) Filipino artist, Philippines; *Man's Backpack*, before 1904; rattan and peel; 20 5/8 x 12 x 9 5/8 inches; Loaned by the University of Pennsylvania Museum of Archaeology and Anthropology, Philadelphia, PA, Gift of the Philadelphia Commercial Museum (also known as the Philadelphia Civic Center Museum), 2003 2021.181

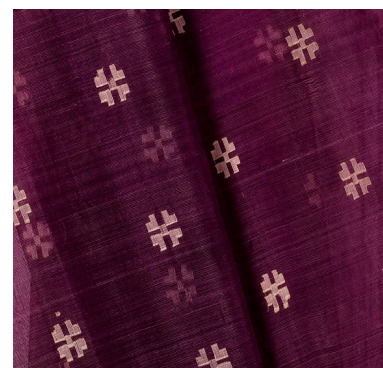
LOOKING PROMPTS

Set a timer for 60 seconds. Look closely at these two images for one minute.
What do you notice?

What do you wonder about the materials or the process for making these objects?

The artists who created these artworks incorporated intricate patterns and weaving techniques. Think about fabric or cloth that you have or wear. What types of patterns do they have?

If you could create your own pattern for a cloth, what would you include?
Draw your pattern.



SAINT LOUIS ART MUSEUM

LOOKING GUIDE
ART ALONG THE RIVERS
SLAM.ORG

Art Along The Rivers

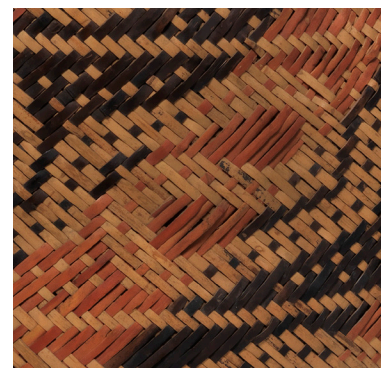
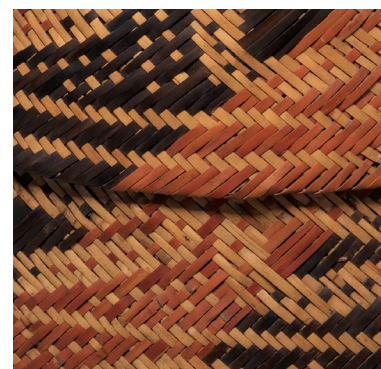
A BICENTENNIAL CELEBRATION

ART ON
DISPLAY



Chitimacha artist, Louisiana; *Basket with Lid*, c.1900; river cane and dye; 14 3/8 x 14 3/16 x 14 3/16 inches; Loaned by the University of Pennsylvania Museum of Archaeology and Anthropology, Philadelphia, PA. Purchased from Miss McIlhenny, 1906–2021.175

CLOSE LOOKING



LOOKING PROMPTS

After looking closely at this basket, what questions would you ask of the artist who made it?

Imagine you were an ant eagerly exploring this object. What would the materials feel like under your feet? What sounds would you hear as you explore? What else would you discover?

Imagine being able to peek inside the basket. What do you imagine it would look like on the inside?

This basket is about the size of a school backpack. If it were your basket, what is something you would put inside? Write a list of items you might keep in this basket or sketch the items you would include.

SAINT LOUIS ART MUSEUM

LOOKING GUIDE
ART ALONG THE RIVERS
SLAM.ORG

Art Along The Rivers

A BICENTENNIAL CELEBRATION

ART ON
DISPLAY



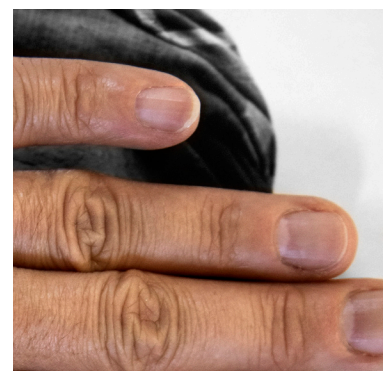
Stephanie Syjuco, American (born Philippines), born 1974; *Block Out the Sun*, 2019; pigment prints, mounted on aluminum; approximate case dimensions: 36 x 84 x 48 inches, image (individual prints): 8 x 10 inches; Courtesy of the artist, Catharine Clark Gallery, San Francisco and RYAN LEE Gallery, New York 2021.185.1-.30; © Stephanie Syjuco

LOOKING PROMPTS

Select either the full view of the artwork or the detail image to explore in depth.
Write a caption for the image you chose to view that describes what is going on
and what message you find in this work of art.

What do you see that supports your caption?

CLOSE LOOKING



SAINT LOUIS ART MUSEUM

LOOKING GUIDE
ART ALONG THE RIVERS
SLAM.ORG